



Photo: Nordic Focus, Vuorinen

PRODUCT CATALOG



TECHNOLOGICAL INNOVATIONS

GLIDE WAX COLLECTION

The Rex N-Kinetic³ glide wax collection offers an option for every weather condition and every price range. The latest additions include innovative coatings of the NFX series and also the extremely durable long distance SISU powders and SISU wax.

WAX TECHNOLOGIES

What makes glide wax extremely fast, durable, and easy to use? Explore the secrets of Rex ski wax technology.



Rex POWER POLYMERS™ is a new generation polymer wax blend that forms a strong bond with the UHMWPE base material used in race skis, ensuring good durability.



Rex UHW™ is an ultra-hard polymer wax blend for the most abrasive conditions. It is only possible to apply in liquid form. The polymer forms a strong bond with the UHMWPE base material used in race skis, ensuring good durability. It is in all Pink/Green waxes in Glide Cleaner and SISU-powders.



Rex N-KINETIC™ is the name of our fluorocarbon free dirt-repelling and glide-enhancing technologies. N-KINETIC™ is constantly evolving, and already at its third generation. This is what makes our glide waxes so darn fast.



The core of our liquid wax technology. Advanced 2-STEP CARRIER™ is a solvent and a unique manufacturing process that enables the temporary liquid state transformation of new-generation polymer waxes – a liquid wax without compromises.



The latest nanotechnology that elevates the performance of NFX powders to a new level. It forms a low surface energy nanomatrix coating on the ski base, providing exceptional glide and durability.

NFX N-KINETIC TOP COATINGS

Uncompromising performance and cutting-edge nanotechnology. A completely new range of fluor-free race waxes for World Cup tracks.



TOP COATINGS

NF-SERIES GLIDERS

The highest-performing Rex glide waxes are in liquid and solid form, with third-generation N-Kinetic³ additives. The new SisU Racing Base Glider has been added to the NF range!



WORLD CUP

G-SERIES GLIDERS

Race-proven liquid glide waxes. Durability, simplicity, and efficiency for all weather conditions.



RACING

ORIGINAL GLIDERS

Industry-standard cross-country glide waxes, including the renowned Rex Blue. New this year: Light Blue Special service wax.



ORIGINAL

WORLD CUP RACING

WORLD CUP RACING

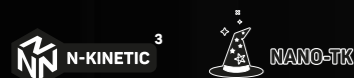
RACING

ORIGINAL

NFX POWDERS

REX PRODUCT DEVELOPMENT'S LATEST ADVANCEMENTS NOW AVAILABLE!

The brand new NFX N-Kinetic powders set a new benchmark for racing top coatings of the post-fluor era. In addition to the N-Kinetic³ additives, the powders also contain specific NANO-TK nanoparticles that elevate their performance and durability on a new level.



NFX 11 #4705

+10...-5°C

Glide powder for wet conditions to mild frost. From mixed to old snow. Based on a NF-level micronized Rex Power Polymer wax blend, with added extra N-Kinetic³ nanoparticles that are embedded in the surrounding powder matrix. Developed especially for wet and moist snow.



NFX 21 #4706

-2...-10°C

Glide powder for all snow types in mild freeze. King of the legendary Rex Blue range of glide waxes. Based on a NF-level micronized Rex Power Polymers wax blend, with added extra N-Kinetic³ nanoparticles embedded in the surrounding powder matrix. The mixture is developed especially for new and mixed snow and snow with relatively high humidity.



NFX 21G #4707

+3...-8°C

The unique mixture of NFX 21g is developed especially for new and mixed snow and snow with relatively high humidity. Based on an NF-level micronized Rex Power Polymers, with added extra N-Kinetic³ nanoparticles that are embedded in the surrounding powder matrix. In addition to the standard new snow additives used in NF 21g, the NFX 21g adds additional nanoparticles for an extra performance boost on new snow.



NFX 41 #4708

+10...-20°C | UHW

A glide powder for old, coarse, and artificial snow in all temperatures. It contains Rex UHW-Ultra Hard Waxes, which glides exceptionally well on coarse slush and slow, squeaky snow. Based on an NF-level micronized UHW wax blend, with added extra N-Kinetic³ nanoparticles that are embedded in the surrounding powder matrix. The additive mix on this powder is specially designed to boost performance on wet and moist snow.



NFX SISU WHITE #4712

ALL TEMPERATURES
ALL SNOW TYPES
BEST FOR TRANSFORMED SNOW

Durable long-distance UHW race powder. Use as the final layer or as an underlayer. It contains Rex UHW -Ultra Hard Waxes that give the powder extra durability. This ultra-hard and durable wax blend can now be applied with a waxing iron, thanks to the powder form.



NFX SISU BLACK #4711

ALL TEMPERATURES
ALL SNOW TYPES
BEST FOR NEW SNOW

A durable long-distance UHW race powder for NEW snow. Use as the top coat or as an underlayer. It contains Rex Ultra Hard Waxes that give powder extra durability. Based on an NF-level micronized Rex Power Polymers wax blend, added extra N-Kinetic³ nanoparticles are embedded in the surrounding powder matrix. The unique mixture of SISU Black is developed especially for new, cold fine-grained and mixed snow and snow with relatively high humidity.

NFX - BLOCKS

The properties of NFX powders as easy-to-use compressed powder blocks. Rub the block onto the ski base, heat it with an iron, cork it, felt it, or use a roto brush.



NFX GOLD #4715

+5...-5°C

N-Kinetic³ glide block for wet conditions. Used for coating glide wax.

NFX Gold is the softest version of the block series. A golden block for mild weather, enhancing glide with the latest nanotechnology.



NFX BLUE #4716

-1...-10°C

N-Kinetic³ glide block for cold weather on all snow types. Used for a top coat.

Based on NFX21 powder, this block offers super glide in an easy-to-use block.



NFX NEW SNOW #4717

+3...-8°C

N-Kinetic³ glide block for new snow. It is best used as a top coat over the NF21G block or liquid.

This block version is based on the NFX21G powder, utilizing completely new additive technology.



NFX OLD SNOW #4718

+5...-20°C

N-Kinetic³ glide block for old snow is specially designed for coarse or icy snow.

This block version contains UHW wax from the NFX41 powder. Used as a top coating for glide waxes.



OLOS #4710

Cold rub-on N-Kinetic³ powder is used to finish glide surfaces. Enhances glide and sensitivity, especially in transformed cold snow.

Sprinkle onto the ski base, then apply with cork, felt, or roto tool. It is not to be applied with waxing iron.

NF GLIDERS

NEW WORLD CUP RACING GLIDERS WITH THIRD-GENERATION N-KINETIC TECHNOLOGY!

The new Rex NF-series introduces the latest generation of our N-Kinetic™ fluor-free glide technology. The most wax-containing liquid gliders on the market are faster drying and make your skis slippery. The third-generation N-Kinetic glide technology has already shown its capabilities in XC Ski World Cup, where top National Teams have used it in competition. The NF series is available in solid and liquid versions in several package sizes. With one 150ml spray wax, you can wax up to 35 pairs of skis. The sponge bottle lasts even longer!



SISU RACING BASE GLIDER ALL TEMPERATURES

Tough and durable wax for long distances and as a base layer for race waxing. It is particularly suitable as an underlayer for NFX powders in all conditions. Use for prepping new skis or freshly stone-ground skis. SISU Racing Base Glider is a Rex Power Polymers wax composition with third-generation N-Kinetic™ additives.

#4714 2x40 g Package
#4713 2x100 g Package

WORLD CUP



NF11 YELLOW

+10...-2°C

New and old snow. The softest wax in the NF series is available in liquid spray form and as a traditional block form. However, unlike conventional wet condition waxes, NF11 is relatively hard and considered a "dry" wax.

- #451 NF11 Yellow | Block 40 g
- #4512 NF11 Yellow | Block 200 g
- #4514 NF11 Yellow | Spray 150 ml
- #4515 NF11 Yellow | Liquid 170 ml
- #4513 NF11 Yellow | Sponge 60 ml



NF21 BLUE

-2...-8/-12°C

For all snow types. NF21 is our all-time fastest fluor-free wax, developed for mild to medium frosts. It is hard as a block but still easy to melt. Developed primarily as an underlayer for top coatings, it has also proven to work exceptionally well as a final layer.

- #452 NF21 Blue | Block 40 g
- #4522 NF21 Blue | Block 200 g
- #4524 NF21 Blue | Spray 150 ml
- #4525 NF21 Blue | Liquid 170 ml
- #4523 NF21 Blue | Sponge 60 ml



NF21G BLACK

+2...-12°C

For new snow. Contains a precisely optimized amount of graphite. The wax hardness is positioned between NF11 Yellow and NF21 Blue for new snow containing a precisely optimized amount of graphite.

- #454 NF21G Black | Block 40 g
- #4542 NF21G Black | Block 200 g
- #4544 NF21G Black | Spray 150 ml
- #4545 NF21G Black | Liquid 170 ml
- #4543 NF21G Black | Sponge 60 ml



NF31 GREEN

-8...-20°C

NF31 is a hard and durable wax for cold conditions on all types of snow. It can also be used in warmer weather when the snow is abrasive or artificial.

NF41 PINK/GREEN

+5...-20°C

For slushy, coarse or artificial snow. NF41 is a revolutionary diamond-hard glide wax that defies the limitations of hot waxing! With its extremely hard UHW polymer wax blend, it takes the durability of liquid glide waxes to a whole new level. Achieve top-notch gliding performance on wet snow, coarse snow, and artificial snow. It's a long-lasting and easy-to-apply choice for alpine skis and snowboards!

- #453 NF31 Green | Block 40 g
- #4532 NF31 Green | Block 200 g
- #4504 NF41 Pink/Green | Spray 150 ml
- #4505 NF41 Pink/Green | Liquid 170 ml
- #4503 NF41 Pink/Green | Sponge 60 ml

G GLIDERS

DURABLE, RACING LEVEL N-KINETIC LIQUID GLIDERS

G-series sprays and sponge applicator waxes are fluor-free and feature glide-enhancing technology for fast training and racing. Like the NF Sprays, they are the most wax-containing liquid gliders on the market and do not need hot waxing to support their durability. It fills minor imperfections in base material like hot wax.



G11 YELLOW

+2/+10...-2°C

The softest wax in the G-series performs best in mild weather. It is an easy-to-apply racing wax for warmer, wet conditions.

G11 Yellow includes all the top wax technologies like N-Kinetic³™-particles, Power Polymers™ advanced wax blend and 2-Step Carrier™ solvent technology.

#436 G11 Yellow | Spray 150 ml
#4361 G11 Yellow | Sponge 60 ml

G21 BLUE

-2...-12°C

Thanks to the N-Kinetic³™ additives and Power Polymers, G21 Blue provides exceptional glide in low-humidity cold weather conditions. The standard many others compare themselves to. High wax content in G21 Blue ensures long-lasting durability.

437 G21 Blue | Spray 150 ml
4371 G21 Blue | Sponge 60 ml

G21G BLACK

+2...-12°C

Designed for fresh snow, G21G contains carefully optimized amounts of graphite. Its hardness falls between G11 yellow and G21 blue waxes.

#439 G21G Black | Spray 150 ml
#4391 G21G Black | Sponge 60 ml

G41 PINK/GREEN

+5...-20°C

It is an extremely hard and wear-resistant glide wax that offers top-level performance in cold, artificial snow and coarse, wet, and icy crust snow. Rex 2-Step Carrier™ solvent technology enables the application of UHW™ ultra-hard glide wax without an iron or scraping. It is great for alpine skis and snowboards!

#435 G41 Pink/Green | Spray 150 ml
#4351 G41 Pink/Green | Sponge 60 ml

ORIGINAL GLIDERS

A LEGENDARY LINE-UP WITH EXCELLENT "BANG FOR THE BUCK"

The Original Rex Glider line consists of non-fluorinated waxes that have earned an excellent reputation among recreational skiers and elite racers. A reliable choice for all levels of skiers. The most popular versions are also available in liquid form.

The new generation POWER POLYMERS™ wax blend offers performance comparable to racing waxes of the past. Made using our latest 2-Step Carrier™ liquid technology, they have high wax content and better abrasion resistance.



ORIGINAL BLUE

-2...-15°C / -1...-10°C

The king of glide waxes! Legendary Rex Blue is one of the best NF gliders in the world – the number-one choice for base waxing, training, and racing. Often the best solution for a recreational skier.

#423 Original Blue | Block 86 g
 #4231 Original Blue | 600g
 #4232 Original Blue | Sponge 60 ml



ORIGINAL PURPLE

+5...-2°C / +2...-4°C

A popular glide wax works from freezing to mild frosts, especially in wet snow. Also available in 60ml sponge bottle.

#425 Original Purple | Block 86 g
 #4252 Original Purple | Sponge 60 ml



ORIGINAL GREEN #424

-8...-20°C | BLOCK 86 G

This is a reliable wax for colder temperatures and conditions where a hard wax is needed, e.g., icy tracks or dirty snow.



ORIGINAL BLACK #433

-7...-25°C | BLOCK 86 G

A special glider designed specifically for low humidity and cold temperatures.



BLUE SPECIAL #4221

SERVICE WAX | 1 KG

Light Blue Special is an easily workable service wax for all skis and snowboards. It penetrates the base and leaves a shiny surface – slightly softer than #423 Blue. Light Blue can be used as a base preparation or stand-alone wax.



BASE PREPARATION PARAFFIN #491

BLOCK 86 G

An easy-to-melt and deep-penetrating wax. It is designed to prepare new skis. Creates a good surface for further waxing.

ORIGINAL GRIP WAXES

A SERIES OF CLASSICS, RECOGNIZED WORLDWIDE BY SKIERS IN THE KNOW.

ORIGINAL



BLUE SPECIAL #120

-1...-4°C

Another Rex legend. It is slightly softer and has more grip than Blue #115 for milder frosts. It provides a good grip even on abrasive tracks.



LIGHT GREEN #105

-8...-15°C

For cold conditions. On new snow provides a good grip at around -6°C. Use it in race waxing as a coating for softer waxes.



UNIVERSAL TAR #141

-1...-25°C

One of our most recognized grip waxes, it is a good choice for skiers looking for simplicity in their waxing. Despite its Universal name, it is a fully proven race wax, especially at mild frosts (-1...-8°C).



RED #131

+1...-1°C

Red kick wax is for zero conditions. When mixed or used as a cover for klusters, it protects against icing on new or granulated snow.



BASE WAX #190

It is a very sticky and durable base wax. A new and upgraded formula makes it easier to apply. Also suitable for adding mid-layers.



PURPLE AND PURPLE LIQUID

+2...-2°C / 0...-2°C

Despite its purple color, this wax is designed for below-freezing temperatures. It is a safe choice for recreational skiers. Available also in 60ml sponge bottle.

#122 Purple | Can
#315 Purple | Sponge 60 ml



BLUE AND BLUE LIQUID

-2...-15°C / -2...-8°C

The king of grip waxes! Widely used as a universal grip wax in cold temperatures, it can be adjusted in terms of grip and glide properties by the thickness of the wax layer. The colder the weather, the thinner the layer.

#115 Blue | Can
#314 Blue | Sponge 60 ml

POWERGRIP

DURABLE, ELASTIC AND GRIPPY WAX SERIES THAT MANY SKIERS SWEAR BY WHEN THE TRACKS ARE HARD.



PURPLE #41

+3...-5°C

It is for icy, coarse, and extremely hard tracks. It can be used instead of klusters in temperatures around the freezing point. Apply a thin layer for new and falling snow.



BLUE #61

-4...-10°C

It is one of the best universal grip waxes on the market. It is extremely durable for all icy and old snow conditions.



GREEN #81

-8...-20°C

The king of PowerGrip waxes! A universal grip wax for cold conditions. It has the same properties as on PowerGrip Blue, but for colder temperatures. Also excellent base wax for racing.



RACING GRIP WAXES

The innovation in our N-line grip waxes consists of both pressure-sensitive and temperature-sensitive raw materials combined in a perfect balance for the demands of today's World Cup racing tracks. Taking advantage of Rex N-Kinetic™ technology increases the glide and dirt repellency of the series. N-series grip waxes can be used as cover waxes or on their own.



THE POPULAR RACING SERVICE GRIP WAXES HAVE BEEN UPDATED TO FLUOR FREE VERSIONS.

Photo: Nordic Focus, Hakola



N11 YELLOW #136

+2...-2°C

This versatile soft grip wax is for both sides of 0C°. On dry snow, use it to cover the harder underlayer; on wet snow, use it to cover the klusters.



N21 BLUE #121

-2...-8°C

N21 has a fairly hard consistency for mid-frost conditions but gives you a good grip thanks to Rex dual compound materials. It can be used independently, as a mid-layer, or as a cover wax.



N21G BLACK #143

-1...-12°C NEW SNOW

Blue condition kick wax designed especially for new snow. It has the same graphite additive used in our glide waxes and amazing antistatic properties.



N41 PINK #101

-2...-15°C OLD SNOW

This grip wax is designed for old, transformed, and artificial snow. Its softness and tackiness give it a good grip, and the added N-kinetic™ compounds give the wax a World Cup-level glide.



N31 GREEN #111

-8...-20°C

A hard grip wax for cold conditions, it has excellent glide properties on abrasive snow and enough grip to be used alone as a final layer.



30G #31

+1...-8°C NEW SNOW

It's back in an NF form! An exceptional grip for fresh snow, providing excellent glide and grip. In cold weather, it's used as a cover for other hard waxes, and in zero conditions, it's applied as a cover over base wax or mixed with klister.



30GB #32

+1...-8°C MIXED SNOW

It is at its best when new snow mixes with old snow and is also effective in transforming snow. It is based on the successful 30G and enhanced with additives used in Rex's new snow special waxes, which increase glide sensitivity and reduce the risk of freezing. In cold weather, it's used as a cover with other grip waxes, and in zero conditions, it's applied as a cover for base wax klister.



TK-1814 #184

-2...-15°C ARTIFICIAL SNOW

It's back in an NF form! Its best performance is in packed or groomed snow or hard-packed transformed snow conditions. It can grip while maintaining release and smoothness in both kick and glide. TK-1814 can be used as a cover over base wax or klister as well as a coating over grip and klister.

RACING SERVICE

KLISTER GRIP WAXES

KLISTERS AND LIQUID KLISTERS

The reliability of Rex klisters is well known among competitive as well as recreational skiers. The special Racing Service versions are World Cup Wax Technician's favorites! Use klister when the tracks are icy, coarse or wet.



TK-2251 #2251
+10...0°C

This is a special klister for use in wet and coarse snow. It can also be the final layer to ensure a powerful grip.



GOLD MOLYBDENUM #2162
+4...-5°C

Based on Gold Klister, this new molybdenum Racing Service version is excellent on dirty and coarse snow. It is a bit softer for extra grip, and on old and coarse snow, the added molybdenum improves its glide properties and decreases the attachment of dirt.

RACING SERVICE



BLUE #200

-5...-30°C

It is famous for its durability on icy and hard tracks. It can be used as a base wax for other klisters and grip waxes in abrasive conditions.



PURPLE #205

+10...-7°C

A durable klister for a wide temperature range, it's suitable for coarse wet snow and coarse icy snow and is a good base layer for other klisters.



UNIVERSAL #240

+10°...-30°C

Despite its Universal name it is widely used in races, too. It is a great all-around klister that can be used as an additive to other klisters for enhanced grip.



RED SPECIAL AND RED SPECIAL LIQUID

+10...0°C

The klister has been completely redesigned for wet and falling snow conditions. New raw materials provide durability and wear resistance without compromising grip properties in extremely wet conditions.



GOLD AND GOLD LIQUID

+3...-7°C

For coarse snow, artificial snow, and glazed tracks, +3-7°C. This is one of Rex's most popular klisters. It works great on skis with a low wax chamber, while normal klisters are best suited for a higher wax chamber. You can apply liquid klister while skiing; no drying time is required!



BASE KLISTER AND BASE KLISTER LIQUID

A binder for klisters and grip waxes, it has excellent adhesion and increases waxing wear resistance. The base klister is where our new liquid klister concept shines. It is the World Cup Wax Technicians' favorite base klister! It works great as a base for all grip waxes, not just klisters.

#210 Red Special
#2101 Red Special | Sponge 60 ml

#216 Gold Klister
#2161 Gold Klister | Sponge 60 ml

#290 Base Klister
#2901 Base Klister Liquid | Sponge 60 ml

CLEANING AND SERVICE

GLIDE CLEANER – THE CORNERSTONE OF REX LIQUID PHILOSOPHY

Always begin waxing by cleaning the glide surfaces with Rex Glide Cleaner. This significantly improves the adhesion and durability of future glide waxes. It also functions as a glide wax, especially in dirty artificial snow.

GLIDE CLEANER

ONLY CLEAN SKIS ARE FAST SKIS

Dirt is the most significant factor that lessens ski gliding performance. With Glide Cleaner, you can quickly clean your skis after every ski session. Your skis will remain extremely fast with minimal effort. It also works as a glide wax, especially in dirty artificial snow.



NEW 60 ML PACKAGING



FLUOR FREE GLIDE CLEANER WITH N-KINETIC TECHNOLOGY

The non-fluorinated Glide Cleaner UHW is based on the same N-kinetic™ generation 3 technology as our top-of-the-line NF Gliders. Rex Glide Cleaner is a 2-way glide surface cleaner/glider that cleans the base as Rex Wax Remover without drying out the base. Apply Glide Cleaner generously to fiber cloth, wipe the base clean, and let dry for 2-3 minutes. Brush well with a nylon brush. After the treatment, Rex Glide Cleaner leaves a tough, thin layer of glide wax that acts as an excellent binder for liquid and solid paraffin waxes. Always start a new glide waxing by cleaning with Rex Glide Cleaner. It will considerably improve the adhesion and durability of sequent wax layers. Rex Glide Cleaner glides well even on its own on dirty and artificial snow.

- #5132 Glide Cleaner | Sponge 60 ML
- #513 Glide Cleaner 170 ML
- #5131 Glide Cleaner 500 ML

WAX REMOVER SKIN SKIS

CLEANSING AND CARE PRODUCTS FOR
SKIN, NANOGRIP, AND ZERO SKIS.



WAX REMOVER

An effective wax remover. It is especially suitable for removing grip wax and klister. It also efficiently cleans Nanogrip and Zero bases.

#501 Wax Remover | 170 ml
#502 Wax Remover | 500 ml
#510 Wax Remover | spray 170 ml



SKIN CARE

It is a glide-enhancing and dirt-repelling conditioning agent for mohair inserts. It does not contain hydrocarbons or harm the mohair grip insert.

#508 Skin Care | 85 ml
#5081 Skin Care | 60 ml

SKIN CLEANER

Effective cleaner for all skin skis. Safe for all manufacturers' mohair inserts. Hydrocarbon-free, it does not weaken the insert's glue. After treatment, apply Rex Skin Care spray to increase the grip zone's glide properties and dirt repellency.

#512 Skin Cleaner | 170 ml
#5122 Skin Cleaner | 60 ml

QUICKTIPS

ARTIFICIAL SNOW

GLIDE

- Glide Cleaner
- Pink / Green (G, NF, HF or RCF)



GRIP

- Liquid Base Klister
- Purple Klister
- Gold Klister or N41 grip



MOIST ARTIFICIAL SNOW / GLAZED TRACKS +1...-7°C

GRIP

- Liquid Base Klister
- Purple Klister
- Gold Klister



When warmer, apply a couple drops of TK- 2251 to the center of grip zone.

MEDIUM FREEZE, DRY SNOW -2...-10°C

GRIP

- Base Wax
- Blue -2...-8°C, 4-5 layers



NEW SNOW, GLAZED AND MOIST -1...-8°C

GRIP

- Base Wax
- Blue Special -1...-4°C, 4-5 layers
- 30 GB, 1 layer



THE KING OF SKI WAXES



WAX RECOMMENDATIONS

TIPS FOR COMPETITIVE AND CITIZEN SKIERS BY OUR RACING SERVICE TEAM.
RECOMMENDATIONS FOR COMPETITIVE AND ACTIVE SKIERS.

The recommendations are divided into four temperature areas and three snow types. The indicated temperatures are air temperatures. When specifying the snow type for a specific day, consider that machine-groomed new snow often equals old snow, and even several days old fresh snow can still be regarded as fresh snow, especially when it's cold.

+10...+1

NEW SNOW

GLIDE:

RACING

- Sisu Racing Base Glider
- NF11
- NFX 21g

ACTIVE SKIERS

- Sisu Racing Base Glider
- NF21g

GRIP:

- Liquid Base Klister #2901
- Purple Klister +10...-7°C #205
- Red Special Klister +10...0°C #210
- Hydrex 3 Wet #4703

OLD SNOW

GLIDE:

RACING

- Sisu Racing Base Glider
- NF11
- NFX11

ACTIVE SKIERS

- Sisu Racing Base Glider
- NF11

GRIP:

- Liquid Base Klister #2901
- Purple Klister +10...-7°C #205
- TK-2251 Klister +10...0°C #2251
- Hydrex 3 Wet #4703

COARSE/ICY/STORED

GLIDE:

RACING

- Sisu Racing Base Glider
- NF41
- NFX41

ACTIVE SKIERS

- Sisu Racing Base Glider
- NF41

GRIP:

- Liquid Base Klister #2901
- Purple Klister +10...-7°C #205
- Hydrex 3 Wet #4703



Always clean the glide surfaces before applying new wax with Rex Glide Cleaner, a cleaning and maintenance agent that also serves as a base wax.



-1...-12

NEW SNOW

GLIDE:

RACING

- Sisu Racing Base Glider
- NF21g
- NFX21g

ACTIVE SKIERS

- Sisu Racing Base Glider
- NF21g

GRIP DRY SNOW:

- Base Wax #190
- Blue -2...-8°C #115
- N21G Black "new snow" -1...-12°C #143

GRIP MOIST SNOW:

- Base Wax #190
- Blue Special -1...-4°C #120
- 30G #31

OLD SNOW

GLIDE:

RACING

- Sisu Racing Base Glider
- NF21
- NFX21

ACTIVE SKIERS

- Sisu Racing Base Glider
- NF21

GRIP DRY SNOW:

- Base Wax #190
- Blue -2...-8°C #115
- 30GB #32

GRIP MOIST SNOW:

- Base Wax #190
- Blue -2...-8°C #115
- 30GB #32

COARSE/ICY/STORED

GLIDE:

RACING

- Sisu Racing Base Glider
- NF41
- NFX41

ACTIVE SKIERS

- Sisu Racing Base Glider
- NF41

GRIP DRY SNOW:

- Liquid Base Klister #290
- Purple Klister #205
- N41 Pink "Old Snow" -2...-15°C #101

GRIP MOIST SNOW:

- Liquid Base Klister #2901
- Purple Klister #205
- Gold Klister #216

+1...-1

NEW SNOW

GLIDE:

RACING

- Sisu Racing Base Glider
- NF11
- NFX 21g

ACTIVE SKIERS

- Sisu Racing Base Glider
- NF21g

GRIP DRY SNOW:

- Base Wax #190
- PurpleSpecial 0...-2°C #122
- N11 Yellow +2...-2°C #136

GRIP MOIST SNOW:

- Liquid Base Klister #2901
- Purple Klister #205
- Gold Klister +3...-7°C #216
- N21G Black -1...-12°C #143

OLD SNOW

GLIDE:

RACING

- Sisu Racing Base Glider
- NF11
- NFX11

ACTIVE SKIERS

- Sisu Racing Base Glider
- NF11

GRIP DRY SNOW:

- Liquid Base Klister #2901
- Purple Klister #205
- Gold Klister +3...-7°C #216

GRIP MOIST SNOW:

- Liquid Base Klister #2901
- Purple Klister #205
- Gold Klister +3...-7°C #216

COARSE/ICY/STORED

GLIDE:

RACING

- Sisu Racing Base Glider
- NF41
- NFX41

ACTIVE SKIERS

- Sisu Racing Base Glider
- NF41

GRIP DRY SNOW:

- Base Klister #290
- Purple Klister #205
- Gold Molybdenum Klister #2162

GRIP MOIST SNOW:

- Base Klister #290
- Purple Klister #205
- Gold Molybdenum Klister #2162

-12...-20

NEW SNOW

GLIDE:

RACING

- Sisu Racing Base Glider
- SISU BLACK

ACTIVE SKIERS

- Sisu Racing Base Glider
- SISU BLACK

GRIP DRY SNOW:

- Base Wax #190
- Blue -2...-8°C #115
- N31 Green -8...-20°C #111

GRIP MOIST SNOW:

- Base Wax #190
- Blue -2...-8°C #115
- NF21G Black +2...-12°C #454

OLD SNOW

GLIDE:

RACING

- Sisu Racing Base Glider
- SISU WHITE

ACTIVE SKIERS

- Sisu Racing Base Glider
- SISU WHITE

GRIP DRY SNOW:

- Base Wax #190
- Blue -2...-8°C #115
- N31 Green -8...-20°C #111

GRIP MOIST SNOW:

- Base Wax #190
- Blue -2...-8°C #115
- N41 Pink "Old Snow" -2...-15°C #101

COARSE/ICY/STORED

GLIDE:

RACING

- Sisu Racing Base Glider
- NF41
- NFX41

ACTIVE SKIERS

- Sisu Racing Base Glider
- NF41

GRIP DRY SNOW:

- Base Klister #290
- Blue -2...-8°C #115
- N41 Pink "Old Snow" -2...-15°C #101

GRIP MOIST SNOW:

- Base Klister #290
- Purple Klister #205
- N41 Pink "Old Snow" -2...-15°C #101

ROTO BRUSHES

SUPERB SELECTION OF REX HIGH-QUALITY ROTO BRUSHES

Rex brushes are designed to achieve a durable and fast gliding surface quickly.

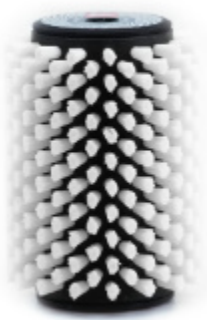
You'll find carefully crafted tools for professional waxing and race-level finishing from our meticulously designed roto-brush range, developed in collaboration with Rex Racing Service professionals.

ROTOBRUSHES

ROTO HANDLE KIT WITH DUAL AXLES AND SHIELD #6292

At the core of roto brushing is the Rex roto handle, which comes with quick-swap 100mm and 140mm axles out of the box. Switching between brushes is quick and easy, because the brush can be swapped without removing the axle from the drill. Compatible with all brushes that use 100mm diameter hexagonal axles.

We recommend using a device with a minimum rotation speed of approximately 1500 RPM. Quick-release shield makes the handle also compatible with large merino rollers. Built with oversized industrial bearings for heavy duty use.



NYLON SEMI HARD 100 MM #6232

This is a general-purpose nylon brush. The bristles' thickness and length have been carefully designed to support the attachment of liquid gliders. Always finish glide waxing using a nylon brush. It is also suitable for finishing top coatings.



ROTO CORK 100MM #6112

It is used on solid and liquid glide coatings and powders without a waxing iron, producing pro-level glide waxing while minimizing waxing waste.



ROTO SOFT NYLON / HORSE HAIR 140MM #6233

The only brush you need for working with solid or liquid glide waxes. Start brushing hard waxes with a horsehair brush and finish with the nylon brush.



ROTO BRUSH STEEL + HORSEHAIR 140MM #6235

The king of roto brushes! A very high-quality and fine stainless steel brush combined with natural hair is the most used brush in Rex's Racing Service. The fine stainless steel is efficient and safe when working with hard waxes and powders.

The perfect tool for the professional for working with hard waxes and powders.



ROTO FELT 100MM #6272

Liquid gliders and top coats are finished by applying the liquid glide wax to the base and letting it dry for about 10 minutes. Then, finish and polish using a felt roto brush, overlapping motions from tip to tail.



HORSE HAIR 100MM #6242

After scraping, the Horsehair quickly opens up the base structure.



ROTO SOFT NYLON / CORK 140MM #6234

A two-in-one tool for applying and finishing glide waxes and top coatings. Use the cork for application, and finish with the nylon brush.



ROTO MERINO THICK AND FLUFFY 100MM #6282

This is used to apply hard glide waxes without a waxing iron. First, apply wax to the wool or rub a layer onto the ski base, then lightly press the roto wool against the base. This method is used in race waxing to apply powder and liquid coatings.

TOP-NOTCH TOOLS

SKI CARE IS MORE THAN JUST SELECTING THE RIGHT WAX

Behind the high-quality Rex hand brushes made in Europe is a team of waxing industry professionals. Every detail of each brush is designed according to the requirements of professional users. Using the right brush for the right situation ensures maximum performance from your skis!

BRUSHES



NYLON BRUSH SOFT #623

A brush for all types of waxes. Blue fine bristles are primarily intended for finishing work polishing.



HORSEHAIR #624

After scraping off hot wax, a horsehair brush opens up the base structure. Like a brass brush, a horsehair brush is also more abrasive than a nylon brush.



NYLON BRUSH HARD #622

Essential equipment for every waxer. Always finish glide waxing by brushing with a nylon brush. Remember to switch to a new brush when transitioning to fluor-free waxes.



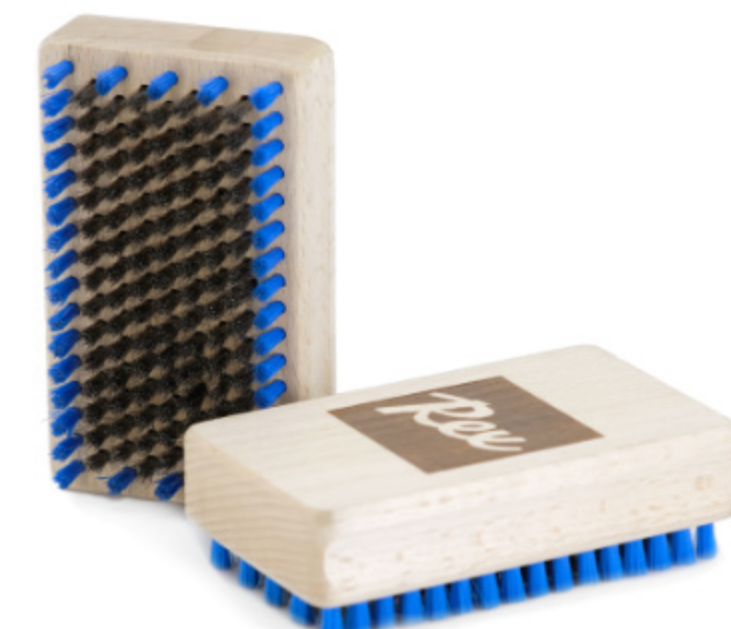
NYLON BRUSH SMALL 54X86MM #6221

Essential equipment for every waxer. The smaller size fits in the palm of your hand and is easy to pack when traveling.



BRASS FINE #632

After scraping hard glide wax, use it to open the base structure. A few strokes from tip to tail are sufficient. It is also suitable for cleaning glide surfaces with or without wax remover.



STAINLESS STEEL #631

Stainless steel brushes are used to open up the base structure during waxing. Stainless steel is the most effective at removing wax. Blue nylon hairs add a more complete finish.

YELLOW ELITE



-2...+10°C

This is a windproof and highly breathable technical racing glove for mild weather conditions. It is designed for a tight grip and made with breathable Revolution Lycra material. It features silicone prints on the palm, an adjustable wrist closure, and a touchscreen-compatible index finger.

SIZES: XS | S | M | L | XL | XXL
#812-817



Windproof
Tuulenpitävä

Highly breathable
Erittäin hengittävä
10,000 g m⁻²
ISO 22922

REVOLUTION
LYCRA

Synthetic
leather

Contains
recycled
materials

BLUE ELITE



-2...-8°C

A windproof and highly breathable technical glove for slightly cold weather. Designed for a snug grip. Made with recycled premium softshell material. It features silicone prints on the palm, adjustable wrist closure, and touchscreen compatible index finger

SIZES: XS | S | M | L | XL | XXL
#842-847



Windproof
Tuulenpitävä

Highly breathable
Erittäin hengittävä
10,000 g m⁻²
ISO 22922

THINSULATE™
Insulation

REVOLUTION
LYCRA

Synthetic
leather

Contains
recycled
materials

GREEN ELITE



-8...-20°C

The warmest glove in the series, windproof and highly breathable, is designed for colder weather. It fits snugly for a firm grip and is made with recycled premium softshell material. It features silicone prints on the palm, adjustable wrist closure, and a touchscreen-compatible index finger.

SIZES: XS | S | M | L | XL | XXL
#882-887



Windproof
Tuulenpitävä

Highly breathable
Erittäin hengittävä
10,000 g m⁻²
ISO 22922

ThermFOAM™
Double
insulation

Synthetic
leather

Contains
recycled
materials



YELLOW

-2...+10°C

The basic model of the yellow glove with a simple wrist closure. Same fit as the Elite model. Windproof and breathable material.

SIZES: XS | S | M | L | XL | XXL
#802-807



Windproof
Tuulenpitävä

Breathable
Hengittävä

REVOLUTION
LYCRA

Synthetic
leather

Contains
recycled
materials



BLUE

-2...-8°C

The basic model of the blue glove with a simple wrist closure. Same fit as the Elite model. Windproof and breathable material.

SIZES: XS | S | M | L | XL | XXL
#822-827



Windproof
Tuulenpitävä

Breathable
Hengittävä

3M
THINSULATE™
Insulation

REVOLUTION
LYCRA

Synthetic
leather

Contains
recycled
materials



GREEN LOBSTER

-8...-20°C

This is an extremely popular and warm two-finger mitten for the coldest weather. ThermFOAM insulation, in addition to Thinsulate, provides warmth while allowing breathability. Highly contoured fit.

SIZES: XS | S | M | L | XL | XXL
#852-857



Windproof
Tuulenpitävä

Breathable
Hengittävä

ThermFOAM™
Double
insulation

REVOLUTION
LYCRA

Synthetic
leather

Contains
recycled
materials

SKIING GLOVES

Rex's new beginning with a fresh concept, improved materials, and fit! Our line-up offers three warmth categories in two performance levels. Choose the technical Elite model with performance fabrics and modern features or the standard model with great value.



MARKA MULTISPORT

Affordable yet high-quality glove for all activities. Excellent fit and durable materials.

SIZES: XS | S | M | L | XL | XXL
#772-777



Windproof
Tuulenpitävä

Breathable
Hengittävä

Synthetic
leather

Contains
recycled
materials

KING
100% UHM CARBON

STRAIGHT TO THE TOP!

All-new and uncompromised Rex racing pole! Ultra-light and ultra-high modulus 100% carbon shaft, quick-swap basket and a chafing-free Pro 360° fit strap that keeps you comfortable even during the longest races and training sessions. Carbon finish cork handle. Available in three free length kits.

ULTRA LIGHT AND EXTRA STIFF

The ultra-lightweight and extremely rigid carbon shaft ensures efficient power transfer and makes skiing feel feather-light. In the longest version of the KING pole, the shaft is a 54g/m HD version, ensuring maximum performance also with heavier built skiers.

 **50g/m**
Ultralight carbon



PRO 360° FIT STRAP

NO PRESSURE POINTS
COMFORTABLE FIT
SECURE GRIP

Chafing-free Pro 360° fit strap keeps you comfortable even during the longest races and training sessions. They are built without hard plastic parts.

XS | S | M | L | XL
#37014-#37018



WORLD CUP RACING
DESIGNED IN FINLAND

LENGTHS

- #30001 Free length kit, 135-150 cm
- #30002 Free length kit, 150-165 cm
- #30003 Free length kit, 165-180 cm



CHANGE-IT SYSTEM

Shaping the lightweight and durable Pro baskets ensures optimal power transmission. The basket creates excellent contact with the snow, resulting in peak performance. The Pro baskets feature the Change-It attachment system, allowing for easy swaps with a quick attachment mechanism that requires no tools or glue after the initial installation.

SKI POLES

A COMPLETE COLLECTION FOR ALL SKIER LEVELS

REXX

DESIGNED IN 



#31 000
FREE LENGTH KIT:
150-165 cm

#31 001
FREE LENGTH KIT:
165-180 cm

#31135-31175
135-175 cm / 5 cm

RACING / ACTIVE
SAPPHIRE

100% CARBON SHAFT PRO FIT STRAP

The Sapphire is a completely redesigned and beautifully finished racing and active skiing pole with a 100% carbon fiber shaft, quick-release basket, cork grip, and Pro Fit strap is an exceptional choice, even for the most demanding skiers. It is available in two free lengths and lengths from 135 to 175 cm in 5 cm increments.



#32135-#32170
135-170 cm / 5 cm

RACING / ACTIVE / JUNIOR
FLASH

70% CARBON SHAFT PRO FIT STRAP

All the features of the Sapphire pole but with a more affordable 70% fiber shaft, quick-release basket, cork grip, and Pro Fit strap. The perfect pole for the citizen racer and junior racer. Available in lengths from 135 to 170 cm in 5 cm increments.



#33130-#33165
130-165 cm / 5 cm

ACTIVE / CASUAL
SPARK

50% CARBON SHAFT PRO FIT STRAP

Have you suddenly developed an interest in skiing? First year junior skier? Rex Spark is an excellent price-to-performance ratio pole with a 50% carbon shaft, carbon cork grip, and Pro Fit strap. It is available in 135 - 175 cm lengths in 5 cm increments.



#34130-#34160
130-160 cm / 5 cm

CASUAL
VENTUS

30% CARBON SHAFT SPORT STRAP

The Ventus pole offers excellent value for money with a 30% carbon fiber shaft, half-cork grip, and a sports strap. Available in lengths from 130 to 160 cm in 5 cm increments. The Ventus won't blow your budget but provides a great skiing experience.



POLE ACCESSORIES

Quickly interchangeable baskets based on Change-It system and easily replaceable straps allow you to update your poles to match the prevailing conditions in a matter of minutes.



CHANGE-IT™



PRO BASKET S
#37006

PRO BASKET M
#37007

PRO BASKET L
#37008

NORDIC BASKET
(GLUE-ON 11 MM)
#37032

FLASH BASKET
(GLUE-ON 9 MM)
S | M | L #37003-#37005

CHANGE-IT PRO BASKETS

The shaping of the lightweight and durable Pro baskets ensures optimal power transmission. The basket creates excellent contact with the snow, resulting in peak performance. The Pro baskets feature the Change-It attachment system, allowing for easy swaps with a quick attachment mechanism that requires no tools or glue after the initial installation.



**ROLLER SKI
ROLLER SKI POLE TIP**
9 mm #37010
10 mm #37011



**CHANGE-IT
ROLLER SKI POLE TIP**
#37009

**PRO 360° FIT
STRAP**
XS | S | M | L | XL
#37014-#37018



PRO STRAP
XS | S | M | L | XL | XXL
#37020-#37025



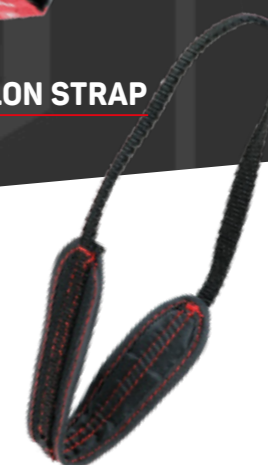
SPORT STRAP
S | M | L | XL | XXL
#37026-#37030



**BIATHLON PRO
STRAP**
#37012



BIATHLON STRAP
#37013



**PRO CARBON
CORK HANDLE**
#37001



**RACE
CORK HANDLE**
#37002



BASKET GLUE
Does exactly what it says on the tin. Use when attaching handles and glue-on baskets to shafts.
#37002

REX ACCESSORIES

FOR TRUE REXPERTS! PRACTICAL AND HIGH-QUALITY REX ACCESSORIES LOOK AWESOME AND OFFER EXCEPTIONAL VALUE!



WAXING IRON 1200W

A powerful 1200W waxing iron, designed to meet professional demands. Thick base that keeps the heat steady. The dimpled base with wax pockets prevents direct contact against the ski base.

#7471



HYDRATION WAIST BAG

PREMIUM THERMO

The top zippered compartment of the waist bag easily fits essentials like your phone, keys, and other necessary items you need on your skiing trip. The hydration bottle is insulated and removable for cleaning.

#7971



SKI BOOT COVERS

SIZES: 37-46

Ski boot thermal covers with a warm pile lining. This cover features a velcro closure and sidewall reinforcements.

#7637-#7645



RACING SERVICE APRON

The waxing apron used by racing teams "Rexperts", equipped with multiple pockets and keeps clothes protected even with the most enthusiastic waxing moves.

#755

SKI BAG

Stylish ski bag made of durable nylon. Fits in 5 pairs of XC skis.

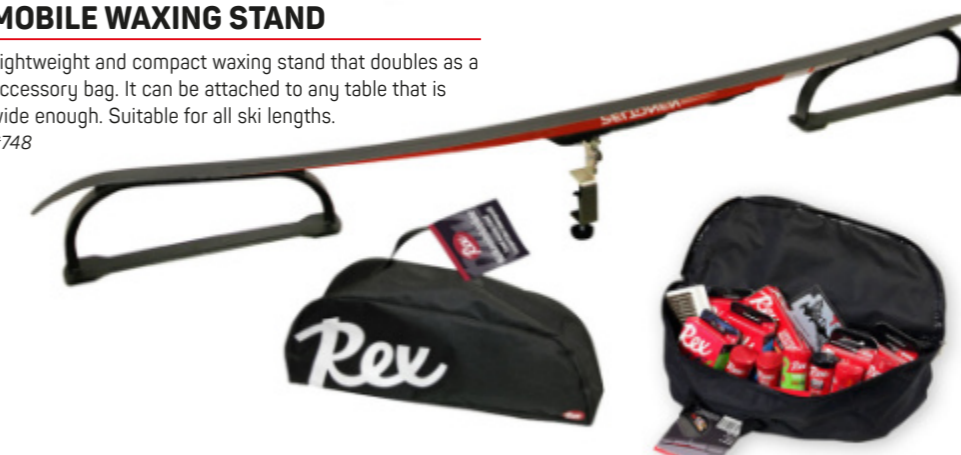
#7972



MOBILE WAXING STAND

Lightweight and compact waxing stand that doubles as an accessory bag. It can be attached to any table that is wide enough. Suitable for all ski lengths.

#748



REX ACCESSORIES

COMPREHENSIVE WAXING TOOLS



FIBER TOWEL #629

Fiber towel 30 m (13x60 cm). Versatile cloth for ski waxing and cleaning. Excellent when using Glide Cleaner and Skin Cleaner. Lint-free product. Grip waxes can be absorbed into the fiber cloth using a waxing iron, making it easy to remove the majority of grip wax and the cloth by pushing with a scraper.



SKI HOLDER #7391

Popular plastic ski/pole holder. Convenient holder for efficiently transporting skis and poles together. Includes one pair. Made in Finland.



SKI HOLDER #7431

Slip-on ski holder. 1 pair.



SMOOTHING CORK #611

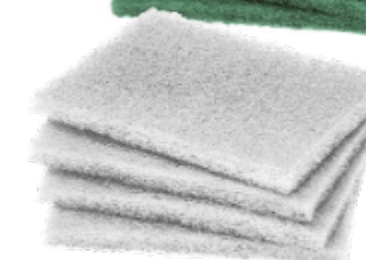
Genuine cork for smoothing wax and applying coatings by rubbing.



FIBERREX SOFT AND COARSE

To clean the base, use Rex Wax Remover during wax removal or when preparing new skis. Effectively cleans when moistened with wax remover fluid.

#626 Soft
#625 Coarse



KLISTER SCRAPER #754

Plastic klister scraper.



GROOVE SCRAPER #607

Plastic groove scraper.



MULTI SCRAPER #602

Plastic multiscraper.



FELT CORK #613

For applying, fixing, and finishing glide waxes.



ROUGHENING CORK #6111

The roughening cork is used to roughen the grip zone of skis as well as the grip zone of zero grip base skis.



SMOOTHING CORK #612

Smoothing cork, divynycell. Used for smoothing grip waxes.

TAKING OUR
WAX EXPERTISE
INTO CYCLING

WORLD LEADING CHAIN LUBRICANTS

**HOT WAXING CHAINS MAKES SENSE:
LOWEST POSSIBLE FRICTION, BEST DIRT
REPELLENCY, AND EASIER MAINTENANCE**

Hot waxing is an increasingly popular method for lubricating bicycle chains. The solid wax does not collect dirt, keeping the entire transmission of the bike clean and repelling dirt more effectively than traditional chain lubes. BLACK DIAMOND HOT WAX combines Black Diamond's proven effective additive technology with over 70 years of wax experience from Rex. Switching to hot waxing makes bike cleaning much easier, and drivetrain component wear is dramatically decreased in long-term use. Hot-waxed chains don't stain and do not require powerful solvents for cleaning. Instead, they can be easily cleaned with hot water only.



BLACK DIAMOND HOT WAX
WORLD'S LEADING BICYCLE CHAIN WAX

Lowest possible friction, best dirt repellency, and easier maintenance.

The black additive block available also separately. Record-breaking lubricating performance, as tested by Zero Friction Cycling and used by top professionals in road cycling, mountain biking, and gravel racing.

Zero Friction
Cycling

#909 Black Diamond 11+1 Box
#9091 Black Additive Block



BLACK DIAMOND E
#908

TUNED FOR E-BIKES
Wax-based high-performance lube for all conditions — record-breaking lubricating performance, as tested by Zero Friction Cycling. It is specially formulated for e-bikes to give chains and chainrings a longer life.



BLACK DIAMOND #907

THE KING OF CHAIN LUBES
Wax-based high performance lube for all conditions. Record-breaking lubricating performance, as tested by Zero Friction Cycling.



DOMESTIQUE #900

ALWAYS WORKING FOR YOUR BENEFIT
The original Rex chain lubricant. Race ski wax technology for bicycle chains.



ARCTIC #930

DESIGNED FOR WINTER
Better protection against snow, freeze and road salt. A winter version of Domesticque.



MORE INFO ABOUT REX BIKE PRODUCTS AT: REX.FI/BIKE



@REXSKIWAX



MADE IN FINLAND

Redox

SINCE 1952

MANUFACTURER

OY Redox AB | Keskustie 62, 19600 Hartola, Finland | tel. +358 (0)3 876 0750 | info@rex.fi

THE KING OF SKI WAXES

SKU 9961



6 4 17839 0996 19